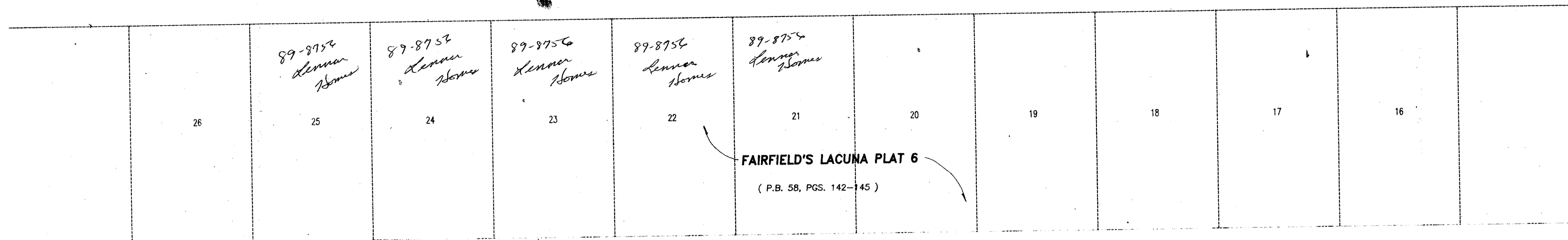


A PART OF BALMORAL COUNTRY CLUB P.U.D.
FAIRFIELD'S LACUNA PLAT 6A
BEING A REPLAT OF A PORTION OF FAIRFIELD'S LACUNA PLAT 6 AS RECORDED IN PLAT
BOOK 58, PAGES 142-145, LYING IN SECTION 5, TOWNSHIP 45 SOUTH,
RANGE 42 EAST, PALM BEACH COUNTY, FLORIDA.

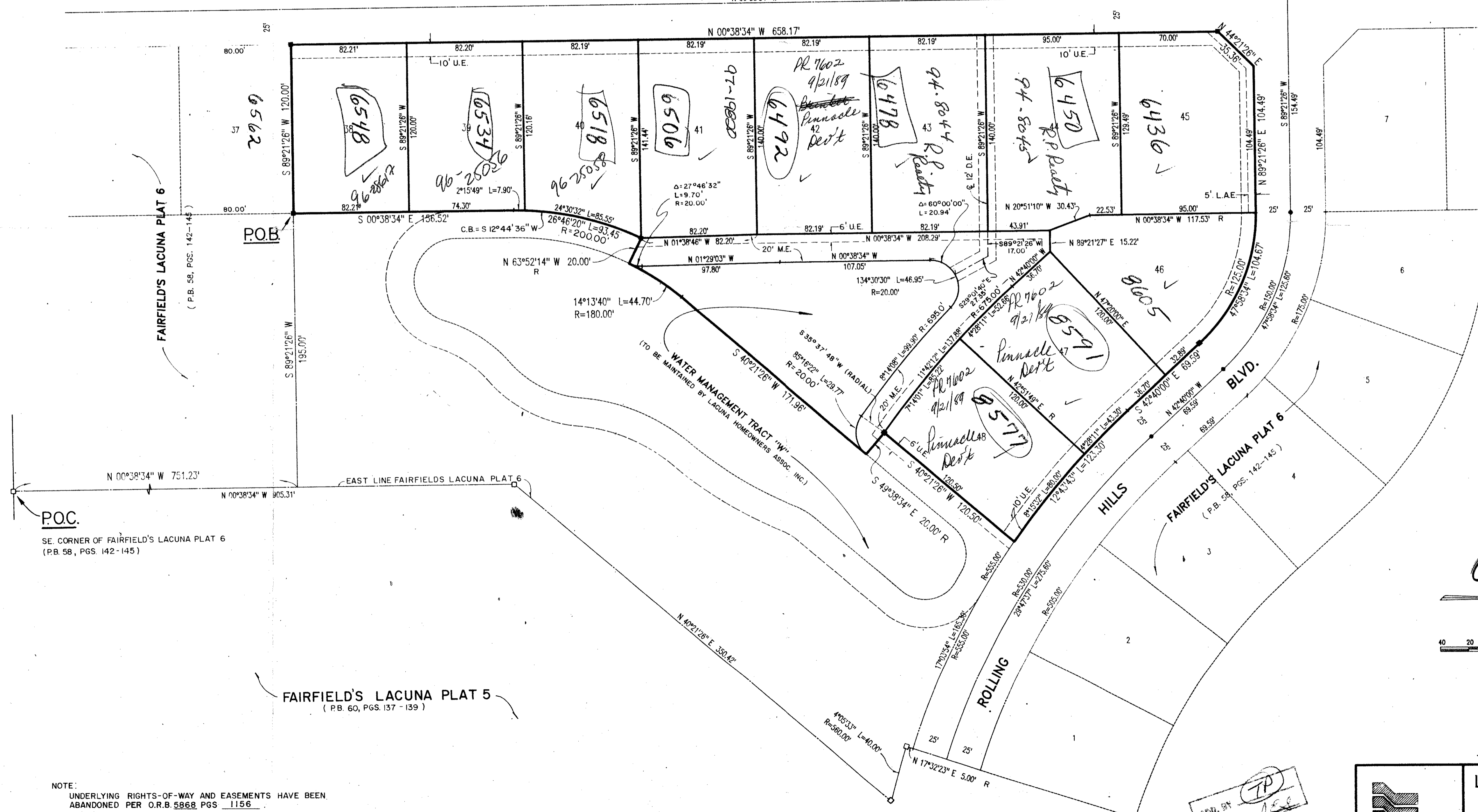
SHEET 2 OF 2

AUGUST, 1988

STATE OF FLORIDA
COUNTY OF PALM BEACH
This Plat was filed for record at
...M. this ___ day of _____, 19___
and duly recorded in Plat Book No. _____
on Page _____
John B. Dunkle, Clerk of the Circuit Court
By _____ D.C.



ROCK CREEK DRIVE
N 00°38'34" W



POB
FAIRFIELD'S LACUNA PLAT 6
(P.B. 58, PGS. 142-145)

POC
SE. CORNER OF FAIRFIELD'S LACUNA PLAT 6
(P.B. 58, PGS. 142-145)

FAIRFIELD'S LACUNA PLAT 5
(P.B. 60, PGS. 137-139)

NOTE:
UNDERLYING RIGHTS-OF-WAY AND EASEMENTS HAVE BEEN
ABANDONED PER O.R.B. 5868 PGS. 1156

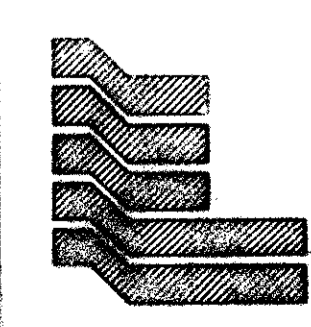


0199-007

Pt. 81-233

6/2/15

REV. BY
CHECKED BY



Landmark Surveying & Mapping
1850 FOREST HILL BOULEVARD
PH. (305)433-5405 SUITE 100 W.P.B. FL

FAIRFIELD'S LACUNA PLAT

SUBDIVISION: Fairfield's Lacuna Plat 6
BOOK: 58
PAGE: 145
PLAT: 81-233
DATE: 8/15/88
PREPARED BY: Colman, C.C.